

**A SAFER, SOCIALLY**  
**JUST COMMUNITY:**  
**OVA MODEL OF CAMPUS**  
**RESPONSE**

**University of Colorado at Boulder**  
**Office of Victim Assistance (OVA)**

**-Mary Friedrichs, LCSW, Director**

**-Jessica Ladd-Webert, LPC, Client Services  
Coordinator**

# OUTLINE FOR THIS SESSION

- About the Office of Victim Assistance (OVA)
- Why our model of addressing all interpersonal harm is important
- Please ask questions as we go
- How to apply this to your campus and other questions



# OFFICE OF VICTIM ASSISTANCE (OVA)

## ○ Mission

- *The Office of Victim Assistance works towards a safer, more socially just, and supportive campus community by providing culturally relevant trauma response and prevention services.*



**Victim Assistance**  
UNIVERSITY OF COLORADO AT BOULDER

*140 UCB, Boulder, CO 80309*

*303-492-8855*

*<http://cuvictimassistance.com>*



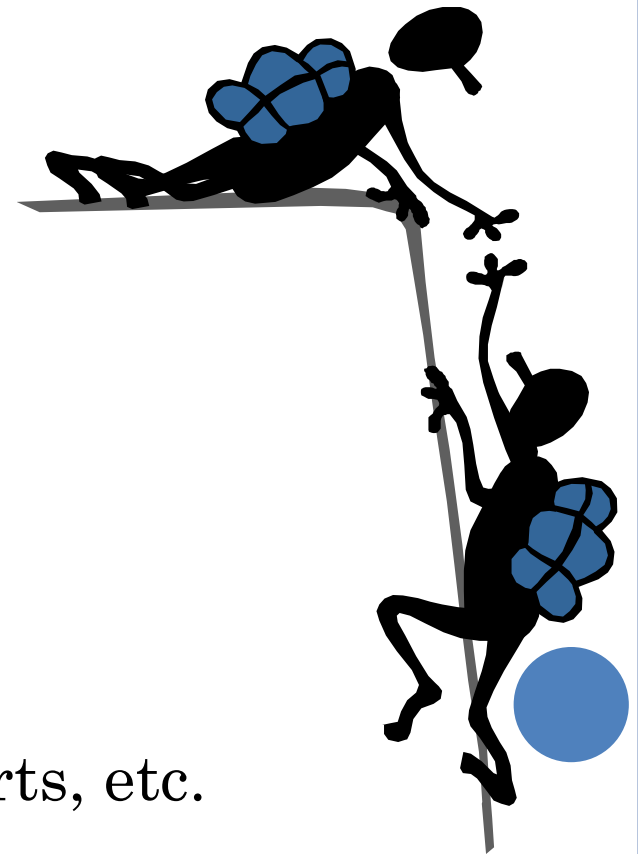
# OVA HISTORY/CONTEXT

- How and why the office formed
- Advocating for clients, while advocating for the bigger issues
- Promoting informed decisions to crisis response
- Funding
  - Department of Justice Grant
    - Funds prevention and response services
    - <http://www.justice.gov/10grants/>



# OVA OVERVIEW

- OVA staff
  - Professional counselors who are also advocates
- Topic areas
  - Assault
  - Bias-motivated incidents
  - Crime
  - Death
  - Harassment
  - Intimate partner abuse
  - Serious accidents
  - Sexual assault and harassment
  - Stalking
  - Other
- Professor notifications, police reports, etc.



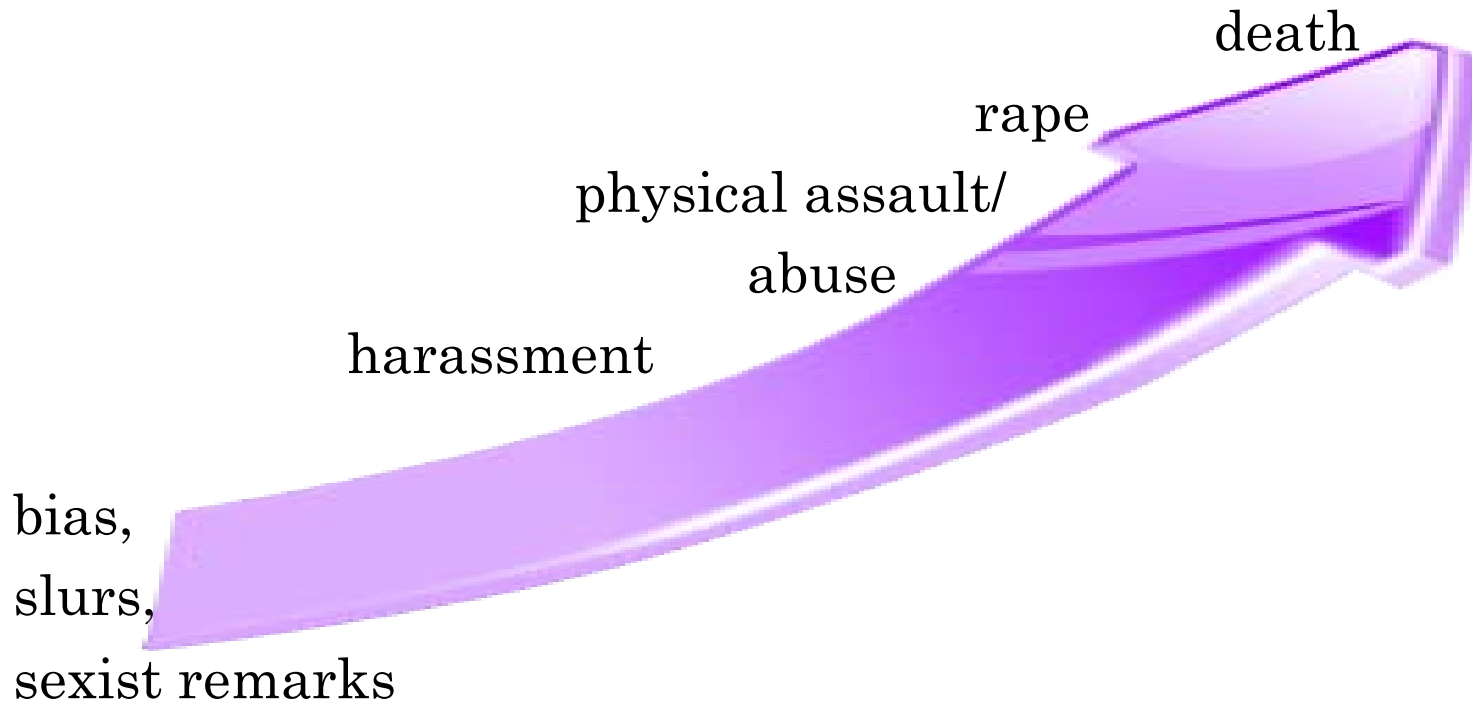
# HYBRID ROLES

- Counselor and Advocate
  - Why both are important
  - Outreach
  - Knowing policy and dynamics beyond the clinical role
- Different than a counseling center or a Women's Resource Center
- OVA is one of the three mental health services on campus
  - Part of the Continuum of Care



# ALL INTERPERSONAL HARM

- We do not privilege gender above other under represented classes
  - This is the underpinning of the OVA philosophy
  - Continuum of Interpersonal Violence



- ALL impact student development, OVA empowers survivors



# RESPONDING TO ALL UNDERREPRESENTED GROUPS

- UCB's campus policy expanding protected classes

Race

Disability

Color

Creed

National origin

Religion

Sex

Sexual orientation

Age

Veteran status

- The World Health Organization (WHO) supports, in its first core principle, the need to promote equity and maximize fairness in providing mental health and psychosocial support among harmed communities. (WHO, 2007)





# HOW CAMPUS USES OVA



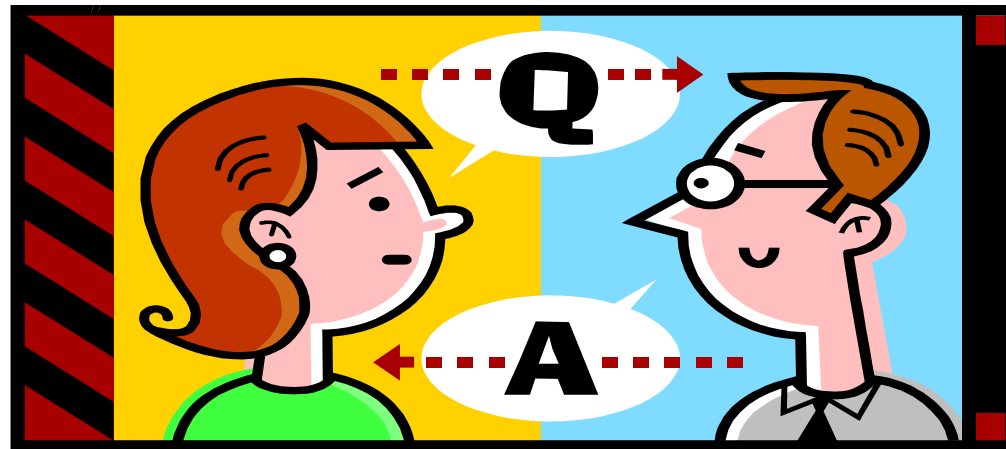
# CRUCIAL COLLABORATIONS

- University Police and City Police
- University Counseling Center
- University Judicial Affairs office
  - Student Conduct Code
- Residence Life
- Office of Orientation
- University Discrimination and Harassment office
  - Policies for staff and faculty
- City/County District Attorney's office
- Community Centers
  - Rape crisis centers, DV shelters, other service providers, etc.



# WHAT YOU CAN DO

- Increase key collaborations
- Expand beyond gender violence to ALL interpersonal violence
- Designate a counselor to learn/respond/advocate for all interpersonal violence
- Get more involved in orientation
- Your ideas
- Questions?



# REMEMBER

- How the first person responds to a survivor of interpersonal violence will impact their healing process and their likelihood to access support in the future.



# HOW TO RESPOND TO INTERPERSONAL TRAUMA

- Check on safety first
- Remain calm
- Listen
- Do NOT ask “WHY” questions
- Follow their lead
- Let them decide what is best for them
- Do NOT define their experience for them
- Know/explain your mandatory reporting obligations
  - If you have one
- Get survivor to a **CONFIDENTIAL** resource
- Give them options
- They have the right to not go forward



# CONTACT INFORMATION:

<http://cuvictimassistance.com>

Mary Friedrichs, LCSW

303-735-4866

[mary.friedrichs@colorado.edu](mailto:mary.friedrichs@colorado.edu)

Jessica Ladd-Webert, LPC

303-735-2323

[laddj@colorado.edu](mailto:laddj@colorado.edu)

